

I2S/TDM Library

A software library that allows you to control an I²S or TDM (time division multiplexed) bus via xCORE ports. I²S and TDM are digital data streaming interface particularly appropriate for transmission of audio data. The components in the library are controlled via C using the XMOS multicore extensions (xC) and can either act as I²S master, TDM master or I²S slave.

Features

- I²S master, TDM master and I²S slave modes.
- Handles multiple input and output data lines.
- Support for standard I²S, left justified or right justified data modes for I²S.
- Support for multiple formats of TDM synchronization signal.
- Sample rate support up to 192KHz.
- Up to 32 channels in/32 channels out (depending on sample rate)

Resource Usage

This following table shows typical resource usage in some different configurations. Exact resource usage will depend on the particular use of the library by the application.

Configuration	Pins	Ports	Clocks	Ram	Logical cores
I2S Master	3 + data lines	3 x (1-bit) + data lines	2	~1.8K	1
I2S Slave	2 + data lines	2 x (1-bit) + data lines	1	~1.3K	1
TDM Master	2 + data lines	2 x (1-bit) + data lines	1	~1.6K	1

Software version and dependencies

This document pertains to version 2.1.1 of this library. It is known to work on version 14.1.1 of the xTIMEcomposer tools suite, it may work on other versions.

This library depends on the following other libraries:

- lib_logging (>=2.0.0)
- lib_xassert (>=2.0.0)

Related application notes

The following application notes use this library:

- AN00162 - Using the I2S library

1 External signal description

1.1 I2S

I²S is a protocol between two devices where one is the *master* and one is the *slave*. The protocol is made up of four signals shown in Table 1.

<i>MCLK</i>	Clock line, driven by external oscillator
<i>BCLK</i>	Bit clock. This is a fixed divide of the <i>MCLK</i> and is driven by the master.
<i>LRCLK</i> (or <i>WCLK</i>)	Word clock (or word select). This is driven by the master.
<i>DATA</i>	Data line, driven by one of the slave or master depending on the data direction. There may be several data lines in differing directions.

Table 1: I2S data wires

The configuration of an I²S signal depends on the parameters shown in Table 2.

<i>MCLK_BCLK_RATIO</i>	The fixed ratio between the master clock and the bit clock.
<i>MODE</i>	The mode - either I ² S or left justified.

Table 2: I2S configuration parameters

The *MCLK_BCLK_RATIO* should be such that 64 bits can be output by the bit clock at the data rate of the I²S signal. For example, a 24.576MHz master clock with a ratio of 8 gives a bit clock at 3.072MHz. This bit clock can output 64 bits at a frequency of 48Khz - which is the underlying rate of the data.

The master signals data transfer should occur by a transition on the *LRCLK* wire. There are two supported modes for I²S. In *I2S mode* (shown in Figure 1) data is transferred on the second falling edge after the *LRCLK* transitions.

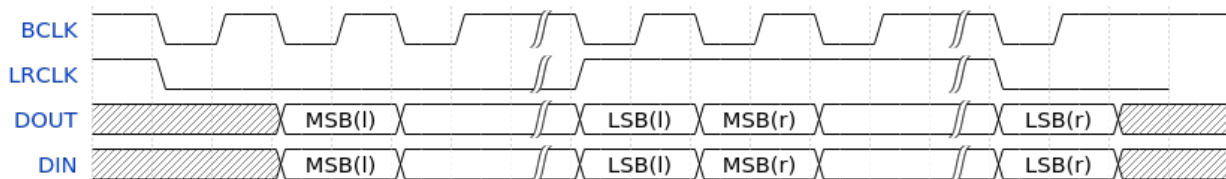


Figure 1: I2S Mode

In *Left Justified Mode* (shown in Figure 2) the data is transferred on the next falling edge after the *LRCLK* transition.

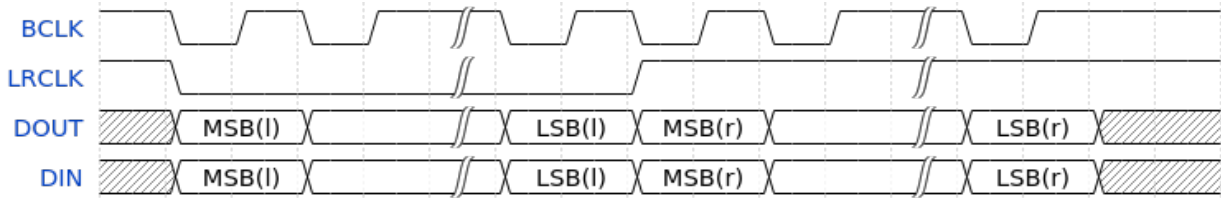


Figure 2: Left Justified Mode

In either case the signal multiplexes two channels of data onto one data line. When the *LRCLK* is low, the *left* channel is transmitted. When the *LRCLK* is high, the *right* channel is transmitted.

All data is transmitted most significant bit first. The xCORE I²S library assumes 32 bits of data between *LRCLK* transitions. How the data is aligned is expected to be done in software by the application. For example, some audio codecs have a *Right Justified* mode; to attain this mode the library should be set to *Left Justified* mode to align the *LRCLK* signal and then the data should be right shifted by the application before being passed to the library.

1.1.1 Connecting I2S signals to the xCORE device

The i2s wires need to be connected to the xCORE device as shown in Figure 3 and Figure 4. The signals can be connected to any one bit ports on the device provide they do not overlap any other used ports and are all on the same tile.

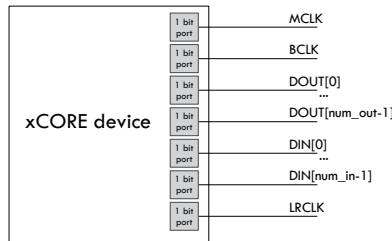


Figure 3: I2S connection to the xCORE device (xCORE as I2S master)

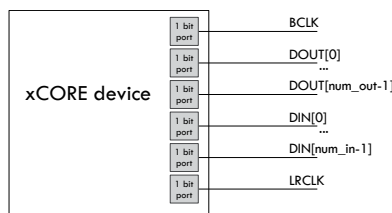


Figure 4: I2S connection to the xCORE device (xCORE as I2S slave)

If only one data direction is required then the *DOUT* or *DIN* lines need not be connected.

1.1.2 I2S master speeds and performance

The speed and number of data wires that can be driven by the I²S library running as I²S master depends on the speed of the logical core that runs the code and the amount of processing that occurs in the user callbacks for handling the data from the library. Table 3 and Table 4 show configurations that are known to work for small amounts of callback processing. Other speeds will be achievable depending on the amount of processing in the application and the logical core speed.

MCLK FREQ	MCLK/BCLK RATIO	SAMPLE FREQ	NUM IN (num channels)	NUM OUT (num channels)
24.576MHz	2	192000	1 (2)	1 (2)
24.576MHz	4	96000	2 (4)	2 (4)
24.576MHz	8	48000	4 (8)	4 (8)
12.288MHz	2	96000	2 (4)	2 (4)
12.288MHz	4	48000	4 (8)	4 (8)

Table 3: Known working I2S master configurations on a 62.5MHz core

MCLK FREQ	MCLK/BCLK RATIO	SAMPLE FREQ	NUM IN (num channels)	NUM OUT (num channels)
24.576MHz	2	192000	2 (4)	2 (4)
24.576MHz	4	96000	4 (8)	4 (8)
12.288MHz	2	96000	4 (8)	4 (8)

Table 4: Known working I2S master configurations on a 83.3MHz core

1.1.3 I2S slave speeds and performance

The speed and number of data wires that can be driven by the I²S library running as slave depends on the speed of the logical core that runs the code and the amount of processing that occurs in the user callbacks for handling the data from the library. Table 5 shows configurations that are known to work for small amounts of callback processing. Other speeds will be achievable depending on the amount of processing in the application and the logical core speed. Note that when acting as slave the performance of the library only depends on the bit clock frequency, not the underlying master clock frequency.

BCLK FREQU	SAMPLE FREQ	NUM IN (num channels)	NUM OUT (num channels)
12.288MHz	192000	4 (8)	4 (8)

Table 5: Known working I2S slave configurations on a 62.5MHz core

1.2 TDM

TDM is a protocol that multiplexes several signals onto one wire. It is a protocol between two devices where one is the *master* and one is the *slave*. The protocol is made up of three signals shown in Table 6.

<i>BCLK</i>	Bit clock line, driven by external oscillator.
<i>FSYNC</i>	The frame sync line. This is driven by the master.
<i>DATA</i>	Data line, driven by one of the slave or master depending on the data direction. There may be several data lines in differing directions.

Table 6: TDM data wires

Unlike I²S, the bit clock is not a divide of an underlying master clock.

The configuration of a TDM signal depends on the parameters shown in Table 7.

<i>CHANNELS_PER_FRAME</i>	The number of channels multiplexed into a frame on the data line.
<i>FSYNC_OFFSET</i>	The number of bits between the frame sync signal transitioning and data being drive on the data line.
<i>FSYNC_LENGTH</i>	The number of bits that the frame sync signal stays high for when signalling frame start.

Table 7: TDM configuration parameters

Figure 5 and Figure 6 show example waveforms for TDM with different offset and sync length values.

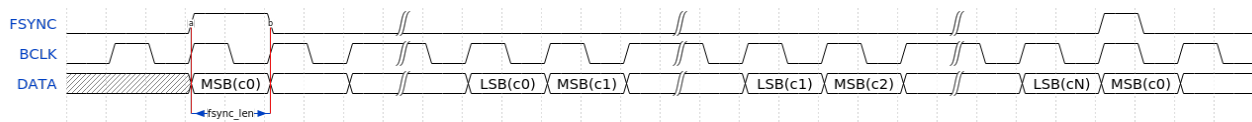


Figure 5: TDM signal (sync offset 0, sync length 1)

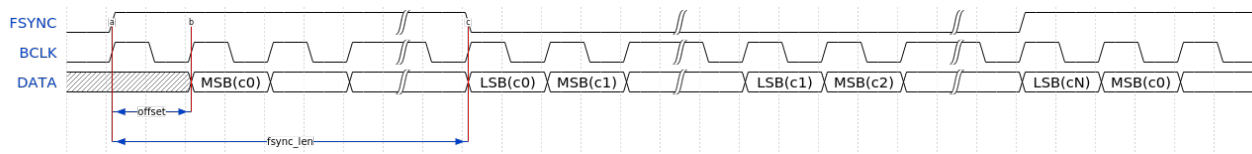


Figure 6: TDM signal (sync offset 1, sync length 32)

The master signals a frame by driving the *FSYNC* signal high. After a delay of *FSYNC_OFFSET* bits, data is driven. Data is driven most significant bit first. First, 32 bits of data from Channel 0 is driven, then 32 bits from channel 1 up to channel N (when N is the number of channels per frame). The next frame is then signalled (there is no padding between frames).

1.2.1 Connecting TDM signals to the xCORE device

The TDM wires need to be connected to the xCORE device as shown in Figure 7. The signals can be connected to any one bit ports on the device provide they do not overlap any other used ports and are all on the same tile.

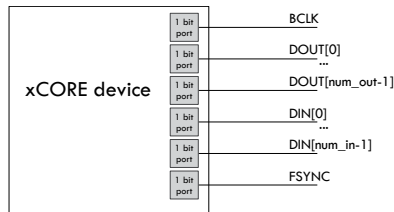


Figure 7: TDM connection to the xCORE device

If only one data direction is required then the *DOUT* or *DIN* lines need not be connected.

1.2.2 TDM speeds and performance

The speed and number of data wires that can be driven by the I²S library running as TDM master depends on the speed of the logical core that runs the code and the amount of processing that occurs in the user callbacks for handling the data from the library. Table 8 show configurations that are known to work for small amounts of callback processing. Other speeds will be achievable depending on the amount of processing in the application and the logical core speed.

BCLK FREQ	CHANNELS PER FRAME	SAMPLE FREQ	NUM IN (num channels)	NUM OUT (num channels)
12.288MHz	8	48000	2 (16)	2 (16)
6.144MHz	4	48000	4 (16)	4 (16)

Table 8: Known working TDM configurations on a 62.5MHz core

1.3 Combined I2S and TDM

The library can drive synchronized I²S master and TDM signals from a single logical core. In this case, the *MCLK* of the I²S interface is the same as the *BCLK* of the TDM master. The sample rate must be the same. This implies that the TDM channels per frame must be equal to the twice the *MCLK/BCLK* ratio.

1.3.1 Connecting synchronized I2S and TDM signals to the xCORE device

The I2S_TDM wires need to be connected to the xCORE device as shown in Figure 8. The signals can be connected to any one bit ports on the device provide they do not overlap any other used ports and are all on the same tile.

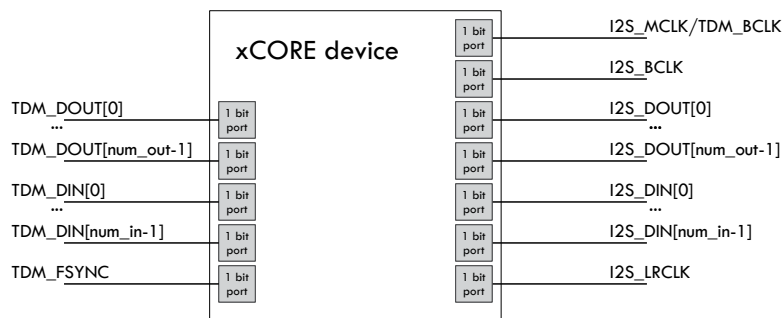


Figure 8: I2S + TDM connection to the xCORE device

If only one data direction is required then the *DOUT* or *DIN* lines need not be connected.

1.3.2 Combined I2S and TDM speeds and performance

The speed and number of data wires that can be driven by the library running combined I²S master and TDM depends on the speed of the logical core that runs the code and the amount of processing that occurs in the user callbacks for handling the data from the library. Table 9 show configurations that are known to work for small amounts of callback processing. Other speeds will be achievable depending on the amount of processing in the application and the logical core speed.

MCLK FREQ	MCLK/BCLK RATIO	SAMPLE FREQ	CHANNELS PER FRAME	TDM	I2S IN/OUT (channels in/out)	TDM IN/OUT (channels in/out)
12.288MHz	4	48000	8		4/4 (8/8)	1/1 (8/8)

Table 9: Known working I2S + TDM configurations on a 62.5MHz core

2 Usage

All I²S functions can be accessed via the `i2s.h` header:

```
#include <i2s.h>
```

You will also have to add `lib_i2s` to the `USED_MODULES` field of your application Makefile.

2.1 The I2S callback interface

All major functions in the I²S library work by controlling the I²S or TDM bus on its own logical core on an xCORE device. The library will then make callbacks to the application when it receives a sample or needs to send a sample.

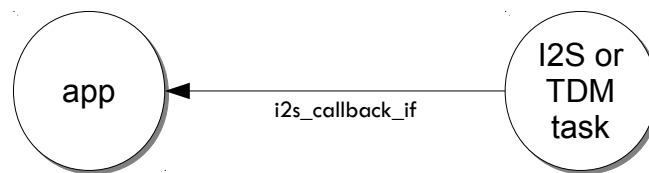


Figure 9: I2S callback usage

The callbacks are implemented by the application providing a task which receives requests on the `i2s_callback_if` xC interface. The application tasks can run the callbacks on the same logical core by implementing a *distributable* task. More information on interfaces and tasks can be found in the XMOS Programming Guide (see [XM-004440-PC](#)).

A template application task is shown below. The specific contents of each callback will depend on the application:

```
[[distributable]]
void my_application(server i2s_callback_if i2s) {
while (1) {
  select {
  case i2s.init(i2s_config_t &i2s_config, tdm_config_t &tdm_config):
    i2s_config.mclk_to_bclk_ratio = 2;
    i2c_config.mode = I2S_MODE_LEFT_JUSTIFIED;
    ...
    break;

  case i2s.restart_check() -> i2s_restart_t restart:
    ...
    break;

  case i2s.receive(size_t index, int32_t sample):
    ...
    break;

  case i2s.send(size_t index) -> int32_t sample:
    ...
    break;
  }
}
```

The send/receive callbacks pass a channel index parameter to the application. This channel maps to the

data signals as shown in §2.6.

The initialization callback will provide configuration structures relevant to the communication bus being used. The application can set the parameters of the bus (*MCLK/BCLK* ratio, *LRCLK* alignment etc.) at this point.

2.2 I2S master usage

The I²S master task is instantiated as a parallel task that run in a par statement. The application can connect via the `i2s_callback_if` interface connection. For example, the following code instantiates an I²S master component and connects to it:

```

out buffered port:32 p_dout[2] = {XS1_PORT_1D, XS1_PORT_1E};
in buffered port:32 p_din[2]  = {XS1_PORT_1I, XS1_PORT_1K};
port p_mclk  = XS1_PORT_1M;
out buffered port:32 p_bclk  = XS1_PORT_1A;
out buffered port:32 p_lrclk = XS1_PORT_1C;

clock mclk = XS1_CLKBLK_1;
clock bclk = XS1_CLKBLK_2;

int main(void) {
    i2s_callback_if i_i2s;
    configure_clock_src(mclk, p_mclk);
    start_clock(mclk);
    par {
        i2s_master(i_i2s, p_dout, 2, p_din, 2,
                  p_bclk, p_lrclk, bclk, mclk);
        my_application(i_i2s);
    }
    return 0;
}

```

2.3 I2S slave usage

The I²S slave task is instantiated as a parallel task that run in a par statement. The application can connect via the `i2s_callback_if` interface connection. For example, the following code instantiates an I²S slave component and connects to it:

```

out buffered port:32 p_dout[2] = {XS1_PORT_1D, XS1_PORT_1E};
in buffered port:32 p_din[2]  = {XS1_PORT_1I, XS1_PORT_1K};
in port p_bclk  = XS1_PORT_1A;
in port p_lrclk = XS1_PORT_1C;

clock bclk = XS1_CLKBLK_1;

int main(void) {
    par {
        i2s_slave(i2s_i, p_dout, 2, p_din, 2,
                  p_bclk, p_lrclk, bclk);
        my_application(i_i2s);
    }
    return 0;
}

```

2.4 TDM usage

The TDM master task is instantiated as a parallel task that run in a par statement. The application can connect via the `i2s_callback_if` interface connection. For example, the following code instantiates an TDM master component and connects to it:

```

out buffered port:32 p_dout[2] = {XS1_PORT_1D, XS1_PORT_1E};
in buffered port:32 p_din[2]  = {XS1_PORT_1I, XS1_PORT_1K};
in port p_bclk  = XS1_PORT_1A;
out buffered port:32 p_fsync = XS1_PORT_1C;

clock bclk = XS1_CLKBLK_1;

int main(void) {
  i2s_callback_if i_i2s;
  configure_clock_src(bclk, p_bclk);
  par {
    tdm_master(i2s_i, p_fsync, p_dout, 2, p_din, 2, bclk);
    my_application(i_i2s);
  }
  return 0;
}

```

2.5 I2S + TDM usage

You can run TDM and I2S master on one core via a task that is instantiated in a par statement. The application can connect via the `i2s_callback_if` interface connection. For example, the following code instantiates an I2S + TDM master component and connects to it:

```

out buffered port:32 p_i2s_dout[2] = {XS1_PORT_1B, XS1_PORT_1F};
in buffered port:32 p_i2s_din[2]  = {XS1_PORT_1G, XS1_PORT_1H};
out buffered port:32 p_tdm_dout[1] = {XS1_PORT_1D};
in buffered port:32 p_tdm_din[1]  = {XS1_PORT_1I};
in port p_mclk  = XS1_PORT_1A;
out buffered port:32 p_fsync = XS1_PORT_1C;
out buffered port:32 p_bclk = XS1_PORT_1E;
out buffered port:32 p_lrclk = XS1_PORT_1K;
clock bclk = XS1_CLKBLK_1;
clock mclk = XS1_CLKBLK_2;

int main(void) {
  i2s_callback_if i_i2s;
  configure_clock_src(mclk, p_mclk);
  start_clock(mclk);
  par {
    i2s_tdm_master(i2s_i, p_i2s_dout, 2, p_i2s_din, 2,
                  p_bclk, p_lrclk, p_fsync,
                  tdm_dout, 1, tdm_din, 1,
                  bclk, mclk);
    my_application(i_i2s);
  }
  return 0;
}

```

2.6 Channel numbering

The callback interface numbers the channels being sent/received for the send and receive callbacks. There is a fixed mapping from these channel indices to the physical interface begin used.

2.6.1 I2S channel numbering

The data words within I²S frames have even channel numbers assigned to the left samples (first within the frame) and odd numbers assigned to the right (second within the frame) samples.

The actual sample number will be given with respect to the order that the ports are provided in the data in and data out array arguments to the component.

For example, in a system with 4 data out ports and 4 data in ports declared as:

```
out buffered port:32 p_dout[4] = {XS1_PORT_1A, XS1_PORT_1B, XS1_PORT_1C, XS1_PORT_1D};
in buffered port:32 p_din[4] = {XS1_PORT_1E, XS1_PORT_1F, XS1_PORT_1G, XS1_PORT_1H};
```

The channels will be numbered as indicated in Figure 10:

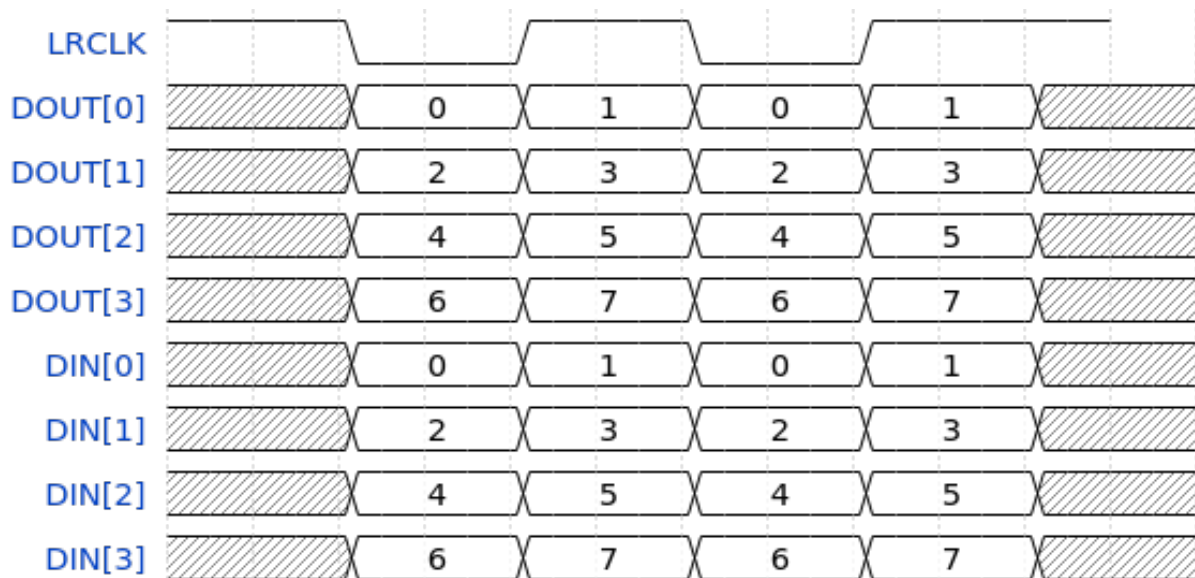


Figure 10: I2S channel numbering

2.6.2 TDM channel numbering

The data words within TDM frames are assigned sequentially from the start of the frame. Each data line will have its channel numbers assigned in the order that the ports are provided in the data in and data out array arguments to the component.

For example, in a system with 2 data out ports and 2 data in ports declared as:

```
out buffered port:32 p_dout[2] = {XS1_PORT_1A, XS1_PORT_1B};
in buffered port:32 p_din[2] = {XS1_PORT_1E, XS1_PORT_1F};
```

With the number of channels per frame as 4, the samples will be numbered as indicated in Figure 11:

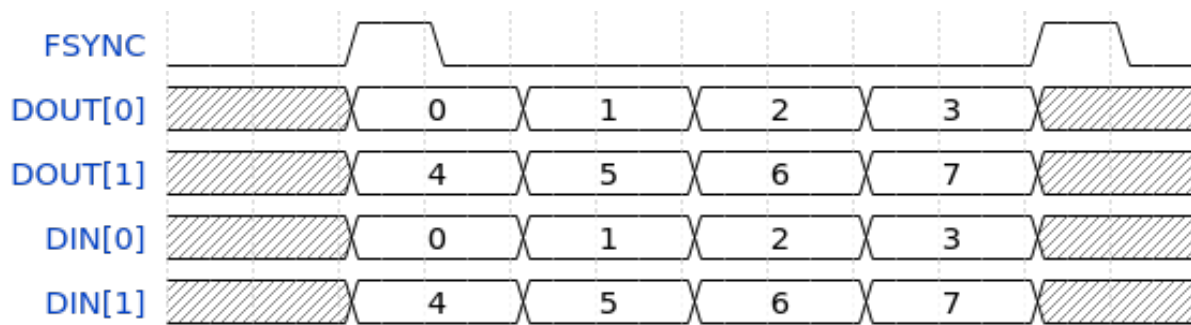


Figure 11: TDM channel numbering

2.6.3 I2S and TDM combined numbering

When using the I²S/TDM combined task the TDM channels are numbered after the I2S channels using the numbering system described in the previous two sections.

2.7 Callback sequences

The send/receive callbacks of I²S callbacks occur in a pre-determined order. The sequence consists of receipt of all even channel, sending of all even channels, receipt of all odd channels and then sending of all odd channels.

Since the hardware port buffers within the xCORE device there is an initial sequence of sends after initialization. Similarly there is a final sequence of receives after a restart/shutdown request. Table 10 shows an example sequence of callbacks for two output lines and two input lines (four channels in and four channels out).

Initial send:	S0 S2 S1 S3
Frame:	R0 R2 S0 S2 R1 R3 S1 S3
Frame:	R0 R2 S0 S2 R1 R3 S1 S3
...	...
Frame:	R0 R2 S0 S2 R1 R3 S1 S3
Final receive:	R0 R2 R1 R3

Table 10: Sample I2S callback sequence

When using TDM, the receive callbacks for a channel occur after the send callbacks. The receive callback for the last channel of the frame will occur after the send callback for the next frame. After a restart request a tail of receive callbacks for the last channel of the final frame will occur. Table 11 shows an example TDM callback sequence for two data lines in and out with four channels per frame.

S0 S4 S1 S5 R0 R4 S2 S6 R1 R5 S3 S7 R2 R6
S0 S4 R3 R7 S1 S5 R0 R4 S2 S6 R1 R5 S3 S7 R2 R6
...
S0 S4 R3 R7 S1 S5 R0 R4 S2 S6 R1 R5 S3 S7 R2 R6
S0 S4 R3 R7 S1 S5 R0 R4 S2 S6 R1 R5 S3 S7 R2 R6
R3 R7

Table 11: Sample TDM callback sequence

In both cases the components attempt to distribute the calling of the callbacks evenly within the frame to allow processing to occur throughout the frame evenly.

The `restart_check` callback is called once per frame to allow the application to request a restart/shutdown of the data bus.

2.8 Clock configuration

For the I²S master and TDM components it is the application's responsibility to set up and start the internal clock used for the master clock before calling the component.

For example, the following code configures a clock to be based of an incoming data wire and starts the clock:

```
configure_clock_src(mclk, p_mclk);
start_clock(mclk);
```

For more information on configuring clocks see the XMOS tools user guide.

3 API

3.1 Supporting types

Type	<code>i2s_mode_t</code>
Description	I2S mode. This type is used to describe the I2S mode.
Values	<code>I2S_MODE_I2S</code> The LR clock transitions ahead of the data by one bit clock. <code>I2S_MODE_LEFT_JUSTIFIED</code> The LR clock and data are phase aligned.

Type	<code>i2s_config_t</code>
Description	I2S configuration structure. This structure describes the configuration of an I2S bus.
Fields	<code>unsigned mclk_bclk_ratio</code> The ratio between the master clock and bit clock signals. <code>i2s_mode_t mode</code> The mode of the LR clock.

Type	<code>tdm_config_t</code>
Description	TDM configuration structure. This structure describes the configuration of a TDM bus.
Fields	<code>int offset</code> The number of bits that the FSYNC signal transitions before the data. Must be a value between 0 and 31. <code>unsigned sync_len</code> The length that the FSYNC signal stays high counted as ticks of the bit clock. <code>unsigned channels_per_frame</code> The number of channels in a TDM frame. This must be a power of 2.

Type	i2s_restart_t
Description	Restart command type. Restart commands that can be signalled to the I2S or TDM component.
Values	<p>I2S_NO_RESTART Do not restart.</p> <p>I2S_RESTART Restart the bus (causes the I2S/TDM to stop and a new init callback to occur allowing reconfiguration of the BUS).</p> <p>I2S_SHUTDOWN Shutdown. This will cause the I2S/TDM component to exit.</p>

3.2 Creating an I2S instance

Function	i2s_master	
Description	<p>I2S master component.</p> <p>This task performs I2S on the provided pins. It will perform callbacks over the <code>i2s_callback_if</code> interface to get/receive data from the application using this component.</p> <p>The component performs I2S master so will drive the word clock and bit clock lines.</p>	
Type	<pre>void i2s_master(client i2s_callback_if i2s_i, out buffered port:32(& ?p_dout)[num_out], static const size_t num_out, in buffered port:32(& ?p_din)[num_in], static const size_t num_in, out buffered port:32 p_bclk, out buffered port:32 p_lrcclk, clock bclk, const clock mclk)</pre>	
Parameters	<code>i2s_i</code>	The I2S callback interface to connect to the application
	<code>p_dout</code>	An array of data output ports
	<code>num_out</code>	The number of output data ports
	<code>p_din</code>	An array of data input ports
	<code>num_in</code>	The number of input data ports
	<code>p_bclk</code>	The bit clock output port
	<code>p_lrcclk</code>	The word clock output port
	<code>bclk</code>	A clock that will get configured for use with the bit clock
	<code>mclk</code>	The clock connected to the master clock frequency. Usually this should be configured to be driven by an incoming master system clock.

Function	i2s_slave	
Description	<p>I2S slave component.</p> <p>This task performs I2S on the provided pins. It will perform callbacks over the <code>i2s_callback_if</code> interface to get/receive data from the application using this component.</p> <p>The component performs I2S slave so will expect the word clock and bit clock to be driven externally.</p>	
Type	<pre>void i2s_slave(client i2s_callback_if i2s_i, out buffered port:32(& ?p_dout)[num_out], static const size_t num_out, in buffered port:32(& ?p_din)[num_in], static const size_t num_in, in port p_bclk, in buffered port:32 p_lrcclk, clock bclk)</pre>	
Parameters	<code>i2s_i</code>	The I2S callback interface to connect to the application
	<code>p_dout</code>	An array of data output ports
	<code>num_out</code>	The number of output data ports
	<code>p_din</code>	An array of data input ports
	<code>num_in</code>	The number of input data ports
	<code>p_bclk</code>	The bit clock input port
	<code>p_lrcclk</code>	The word clock input port
	<code>bclk</code>	A clock that will get configured for use with the bit clock

3.3 Creating an TDM instance

Function	tdm_master	
Description	<p>TDM master component.</p> <p>This task performs TDM on the provided pins. It will perform callbacks over the <code>i2s_callback_if</code> interface to get/receive data from the application using this component.</p> <p>The component performs as TDM master so will drive the <code>fsync</code> signal.</p>	
Type	<pre>void tdm_master(client interface i2s_callback_if tdm_i, out buffered port:32 p_fsync, out buffered port:32(& ?p_dout)[num_out], size_t num_out, in buffered port:32(& ?p_din)[num_in], size_t num_in, clock clk)</pre>	
Parameters	<code>i2s_i</code>	The I2S callback interface to connect to the application
	<code>p_fsync</code>	The frame sync output port
	<code>p_dout</code>	An array of data output ports
	<code>num_out</code>	The number of output data ports
	<code>p_din</code>	An array of data input ports
	<code>num_in</code>	The number of input data ports
	<code>clk</code>	The clock connected to the bit/master clock frequency. Usually this should be configured to be driven by an incoming master system clock.

Function	i2s_tdm_master
Description	<p>I2S master + TDM master component.</p> <p>This task performs I2S and TDM on the provided pins. The signals need to be synchronized. It will perform callbacks over the <code>i2s_callback_if</code> interface to get/receive data from the application using this component.</p> <p>The component assumes that the bit clock of the TDM signal is the same as the master clock of the I2S signal.</p> <p>The component performs I2S master so will drive the word clock and bit clock lines. It will also acts as TDM master and drives the <code>fsync</code> signal.</p>
Type	<pre>void i2s_tdm_master(client interface i2s_callback_if i, out buffered port:32 i2s_dout[num_i2s_out], static const size_t num_i2s_out, in buffered port:32 i2s_din[num_i2s_in], static const size_t num_i2s_in, out buffered port:32 i2s_bclk, out buffered port:32 i2s_lrclk, out buffered port:32 tdm_fsync, out buffered port:32 tdm_dout[num_tdm_out], size_t num_tdm_out, in buffered port:32 tdm_din[num_tdm_in], size_t num_tdm_in, clock clk_bclk, clock clk_mclk)</pre>

Continued on next page

Parameters	
<code>i2s_i</code>	The I2S callback interface to connect to the application
<code>i2s_dout</code>	An array of I2S data output ports
<code>num_i2s_out</code>	The number of I2S output data ports
<code>i2s_din</code>	An array of I2S data input ports
<code>num_i2s_in</code>	The number of I2S input data ports
<code>i2s_bclk</code>	The I2S bit clock output port
<code>i2s_lrclk</code>	The I2S word clock output port
<code>tdm_fsync</code>	The TDM frame sync output port
<code>tdm_dout</code>	An array of TDM data output ports
<code>num_tdm_out</code>	The number of TDM output data ports
<code>tdm_din</code>	An array of TDM data input ports
<code>num_tdm_in</code>	The number of TDM input data ports
<code>bclk</code>	A clock that will get configured for use with the I2S bit clock
<code>mclk</code>	The clock connected to the master clock frequency. Usually this should be configured to be driven by an incoming master system clock. This clock is also used as the TDM bit clock.

3.4 The I2S callback interface

Type	i2s_callback_if	
Description	Interface representing callback events that can occur during the operation of the I2S task.	
Functions	Function	init
	Description	I2S initialization event callback. The I2S component will call this when it first initializes on first run of after a restart.
	Type	void init(i2s_config_t & ?i2s_config, tdm_config_t & ?tdm_config)
	Parameters	<p>i2s_config This structure is provided if the connected component drives an I2S bus. The members of the structure should be set to the required configuration.</p> <p>tdm_config This structure is provided if the connected component drives an TDM bus. The members of the structure should be set to the required configuration.</p>
	Function	restart_check
	Description	I2S restart check callback. This callback is called once per frame. The application must return the required restart behaviour.
	Type	i2s_restart_t restart_check()
	Returns	The return value should be set to I2S_NO_RESTART, I2S_RESTART or I2S_SHUTDOWN..

Continued on next page

Type	i2s_callback_if (continued)					
	Function	receive				
	Description	Receive an incoming sample. This callback will be called when a new sample is read in by the I2S component.				
	Type	void receive(size_t index, int32_t sample)				
	Parameters	<table border="0"> <tr> <td data-bbox="608 607 756 645">index</td> <td data-bbox="775 607 1428 645">The index of the sample in the frame.</td> </tr> <tr> <td data-bbox="608 674 756 712">sample</td> <td data-bbox="775 674 1428 837">The sample data as a signed 32-bit value. The component may not use all 32 bits of the value (for example, many I2S codecs are 24-bit), in which case the bottom bits are ignored.</td> </tr> </table>	index	The index of the sample in the frame.	sample	The sample data as a signed 32-bit value. The component may not use all 32 bits of the value (for example, many I2S codecs are 24-bit), in which case the bottom bits are ignored.
	index	The index of the sample in the frame.				
	sample	The sample data as a signed 32-bit value. The component may not use all 32 bits of the value (for example, many I2S codecs are 24-bit), in which case the bottom bits are ignored.				
Function	send					
Description	Request an outgoing sample. This callback will be called when the I2S component needs a new sample.					
Type	int32_t send(size_t index)					
Parameters	index The index of the requested sample in the frame.					
Returns	The sample data as a signed 32-bit value. The component may not have 32-bits of accuracy (for example, many I2S codecs are 24-bit), in which case the bottom bits will be arbitrary values.					

APPENDIX A - Known Issues

No known issues.

APPENDIX B - I2S library change log

B.1 2.1.1

- Update to source code license and copyright

B.2 2.1.0

- Input or output ports can now be null, for use when input or output-only is required
- Software license changed to new license

B.3 2.0.1

- Performance improvement to TDM to allow 32x32 operation
- Bug fix to initialisation callback timing that could cause I2S lock up

B.4 2.0.0

- Major update to API from previous I2S components
- Changes to dependencies:
 - lib_logging: Added dependency 2.0.0
 - lib_xassert: Added dependency 2.0.0